



The Magnolia-R

The Juniper

The Dogwood



The Magnolia-R

3 bedrooms (option to 4) • 2.5 baths (option to 3)

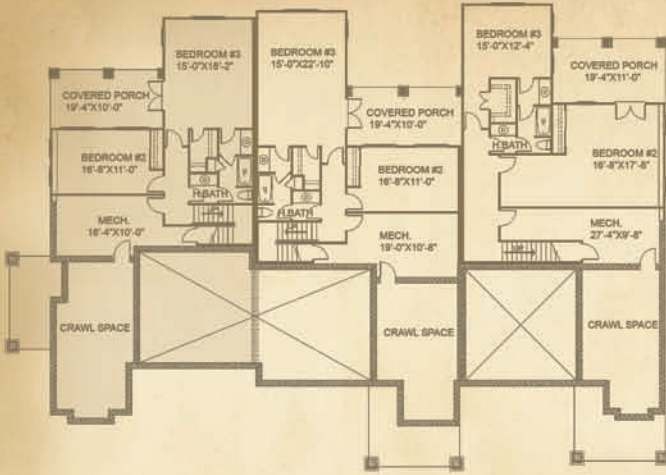
Large kitchen w/breakfast nook

Luxurious master suite

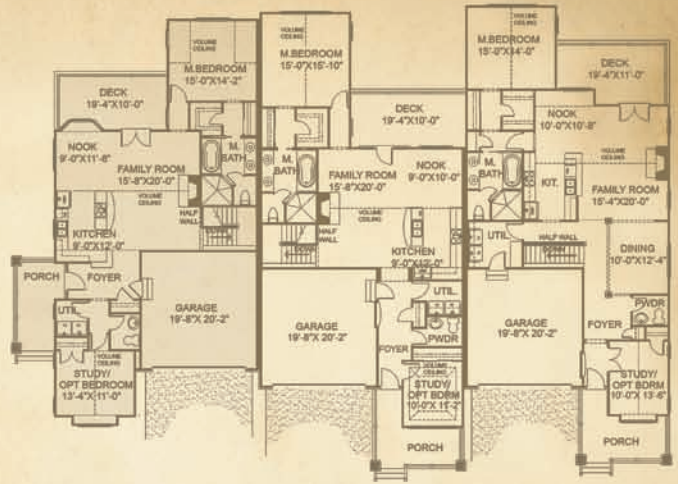


BILTMORE FARMSSM
HOMES

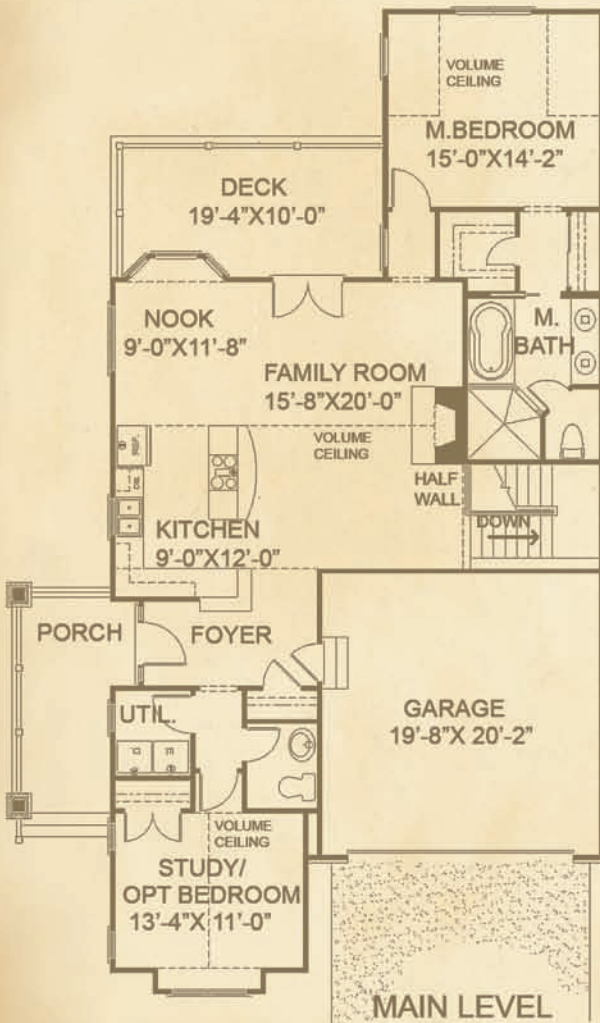
Marketed exclusively by Beverly-Hanks & Associates.



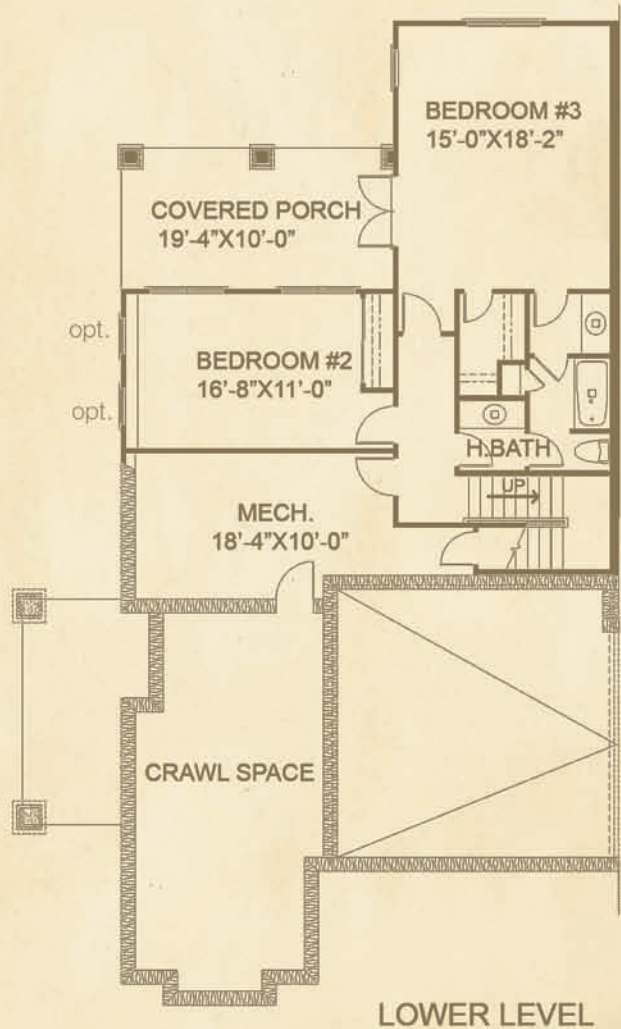
LOWER LEVEL



MAIN LEVEL



MAIN LEVEL



LOWER LEVEL

Floor plans and renderings are artists' conceptions that may vary in detail from the actual homes.
 Floor plans and renderings are preliminary and not for construction. Room dimensions and square footage are approximate.
 All dimensions and specifications (including square footages) are approximate and artist's conceptions.
 Product availability, prices, floor plans, elevations, and specification levels are subject to change without notice or obligation.
 Building vertical orientation between units can change to fit lot topography based on builder's discretion.
 Biltmore Farms HomesSM is a trademark of Biltmore Farms, LLC. ©2007 Biltmore Farms, LLC

